

cotton planner **new**

- Desktop reference containing all 1,925 dyed colors on 100% cotton chips in one convenient binder
- Includes PANTONE FASHION + HOME color chooser enabling digital and Web design



cotton swatch files **new**

- Premier design tool contains removable 2" x 2" loose format cotton swatches of all 1,925 colors
- Allows designers to create solid color palettes and then mix and match for yarn dye and print combinations
- Chromatically arranged by color family
- Provides quality control with a reference of all colors being used for production



cotton passport **new**

- For those on the move, a compact, portable book displaying our cotton color chips presented in a user-friendly accordion format
- All 1,925 colors are chromatically arranged and permanently affixed
- Ideal for making quick color choices in the office or while traveling



The color of ideas.™

FASHION + HOME

Off-the-shelf and ready to inspire.

Product Catalog



PANTONE®
PANTONE, INC., 590 COMMERCE BLVD.
CARLSTADT, NJ 07072-3038

PANTONE® FASHION + HOME - A SMART New System

Changes in today's marketplace – and more importantly findings from extensive market research – have inspired us to reevaluate, restyle and reconfigure our FASHION + HOME Color System so it works more effectively for you. We're proud to unveil this new system that provides maximum utility and relevancy, comprised completely of exciting solutions.

Now an off-the-shelf solution catering to everyone's needs and budget just got smarter.

PANTONE FASHION + HOME

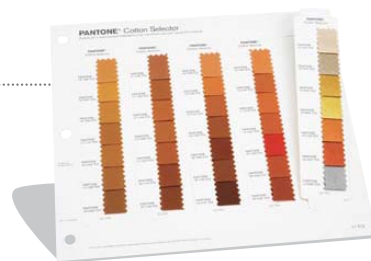
Cotton Products SMART color swatch card **new**

- Individual loose fabric swatches are available for all 1,925 colors
- Double folded fabric measures 4" x 4"
- Unfolded swatch measures 4" x 8" giving vendors twice the amount of fabric for optimum color visualization and instrumental evaluation
- Each card is identified with four PANTONE Color name and number strips so that a swatch can be cut when being used for multiple design projects and locations.
- The loose, unbacked design enables fabric to be compared to skin tones and other materials



cotton selector **new**

- All 1,925 colors are divided into groups of seven colors mounted waterfall style on individual removable strips
- Each two-ply cotton swatch featured on the strip measures .75" W x .875" H



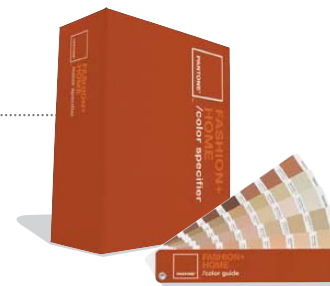
Paper Products color guide

- The essential color tool that is always available at your fingertips
- Chromatically arranged for ease-of-use
- Each color is numerically referenced and named to assist quick color decisions
- Portable design tool ideal for sample shopping, client or vendor meetings or on-site reviews



color specifier and guide

- Ideal for non-fabric materials used to create products for home furnishings, fashion accessories, cosmetics or industrial design
- Six larger sized tear-out chips for all 1,925 colors in one convenient binder
- Packaged with portable color guide (specifier book also sold separately)



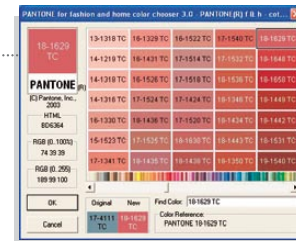
paper specifier replacement page

- Replaces individual pages in specifier book
- Each page contains seven PANTONE Colors with six tear-out chips per color
- Available worldwide



color chooser kit

- Enables digital and Web design with PANTONE FASHION + HOME Colors
- Integrates seamlessly with custom color libraries in Adobe® Photoshop®, Adobe Illustrator® and CorelDRAW®
- Experience optimized RGB and HTML values for improved onscreen visualization.
- Includes CMYK values for printing PANTONE FASHION + HOME Colors
- Available for both Macintosh OS X and Microsoft® Windows® 98, 2000, ME and XP
- Includes color chooser software and PANTONE FASHION + HOME color guide for visualization of colors on and off screen. (color chooser also sold separately)



PANTONE® and other Pantone, Inc. trademarks are the property of Pantone, Inc. Adobe, Illustrator and Photoshop are either registered trademarks or trademarks of Adobe Systems Incorporated in the United States and/or other countries. Microsoft and Windows are either registered trademarks or trademarks of Microsoft Corporation in the United States and/or other countries. Corel is a trademark or registered trademark of Corel Corporation or Corel Corporation Limited in Canada, the United States and/or other countries. Apple, Macintosh, Mac and Mac OS are trademarks of Apple Computer, Inc. Clariant is a registered trademark of Clariant Ltd. All other product names and trademarks are the property of their respective owners. Any omission of such marks from any product is regretted and is not intended as an infringement on such trademarks. PANTONE Colors may not match PANTONE-identified standards. Consult current PANTONE Color Publications for accurate color. © Pantone, Inc., 2007. All rights reserved.